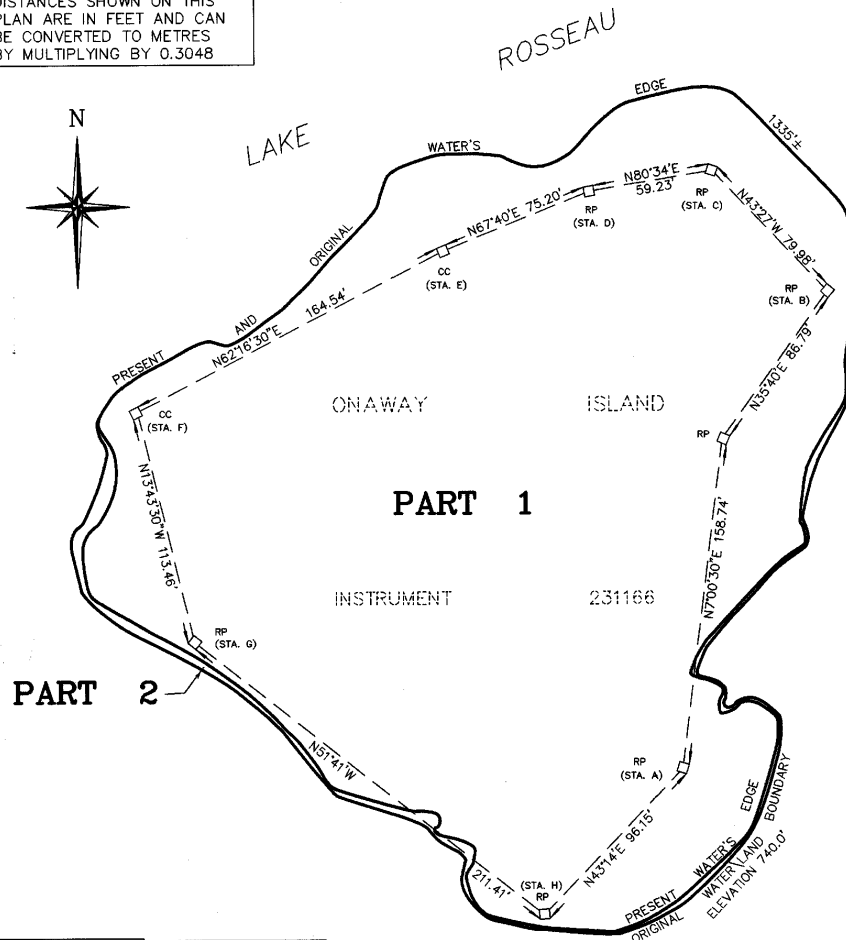


IMPERIAL  
DISTANCES SHOWN ON THIS  
PLAN ARE IN FEET AND CAN  
BE CONVERTED TO METRES  
BY MULTIPLYING BY 0.3048



RADIAL SURVEY TO LOCATE THE PRESENT WATER'S EDGE.

COURSE	DISTANCE	BEARING
A-1	84.8'	S22°30'W
A-2	63.2'	S21°4'W
A-3	43.6'	S46°41'E
A-4	51.0'	N61°50'E
A-5	45.0'	N44°46'E
A-6	32.1'	N35°04'E
A-7	42.9'	N28°21'E
A-8	45.3'	N4°56'E
A-9	59.5'	N9°25'E
A-10	106.8'	N24°48'E
A-11	122.9'	N28°41'E
A-12	131.8'	N25°22'E
A-13	155.5'	N22°35'E
A-14	163.8'	N23°51'E
A-15	207.0'	N22°14'E
F-16	28.0'	S20°31'W
F-17	43.0'	S15°59'W
F-18	68.0'	S21°50'W
F-19	90.0'	S14°26'W
G-20	19.0'	N75°23'W
G-21	29.0'	S44°31'E
G-22	60.0'	S45°58'E
G-23	83.0'	S44°22'E
H-24	115.0'	N59°24'W
H-25	69.0'	N46°25'W
H-26	66.0'	N52°05'W
H-27	46.0'	N46°12'W
H-28	41.0'	N64°45'W
H-29	28.0'	N88°45'W
H-30	6.0'	S3°34'W

RADIAL SURVEY TO LOCATE THE ORIGINAL LAND WATER BOUNDARY AT ELEVATION 740.0' G.S.C.

COURSE	DISTANCE	BEARING
A-1	85.0'	S21°00'W
A-2	65.8'	S1°09'W
A-3	44.5'	S46°41'E
A-4	52.5'	N61°50'E
A-5	47.4'	N44°46'E
A-6	35.9'	N35°04'E
A-7	43.9'	N28°21'E
A-8	45.6'	N9°05'E
A-9	59.5'	N11°23'E
A-10	106.8'	N25°41'E
A-11	122.9'	N29°07'E
A-12	131.8'	N26°04'E
A-13	155.5'	N24°02'E
A-14	163.8'	N24°14'E
A-15	207.0'	N22°25'E
F-16	28.0'	S34°48'W
F-17	43.0'	S28°14'W
F-18	70.0'	S26°33'W
F-19	93.0'	S14°26'W
G-20	19.0'	S86°14'W
G-21	29.0'	S39°11'E
G-22	60.0'	S44°16'E
G-23	83.0'	S42°43'E
H-24	116.0'	N59°27'W
H-25	66.0'	N53°45'W
H-26	46.0'	N44°40'W
H-27	41.0'	N71°16'W
H-28	28.0'	S86°37'W
H-29	7.0'	S3°34'W

RADIAL SURVEY TO LOCATE THE PRESENT AND ORIGINAL WATER'S EDGE.

COURSE	DISTANCE	BEARING
B-1	13.0'	S77°43'E
B-2	37.6'	N14°30'E
C-3	62.4'	S75°31'E
C-4	38.6'	N10°59'E
C-5	40.8'	N20°27'W
C-6	53.6'	N54°35'W
D-7	20.3'	N36°06'W
D-8	27.5'	N64°36'W
D-9	44.8'	N67°50'W
E-10	46.4'	N0°55'W
E-11	44.9'	N33°08'W
E-12	37.9'	N54°08'W
F-13	92.0'	N53°55'E
F-14	55.0'	N5°38'E
F-15	47.0'	N44°02'E
F-16	14.0'	N26°09'W
F-17	18.0'	S81°41'W

NOTE - THE LIMIT OF LAKE ROSSEAU AS SHOWN HEREON WAS ESTABLISHED AT CONTOUR ELEVATION 740.0' G.S.C. DATUM AND IS THE BEST AVAILABLE EVIDENCE OF THE ORIGINAL HIGH WATER MARK OR WATER'S EDGE EXISTING AT THE TIME OF THE ORIGINAL SURVEY OF THE TOWNSHIP OF MEDORA.

ELEVATIONS SHOWN HEREON WERE OBTAINED BY WATER TRANSFER FROM THE CANADIAN HYDROGRAPHIC SURVEY BENCHMARK LOCATED AT THE LOCKS IN PORT CARLING HAVING AN ELEVATION OF 744.88 FEET.

I REQUIRE THIS PLAN TO BE DEPOSITED UNDER THE REGISTRY ACT.

DATE: OCTOBER 31, 1997.

*DB Chapple*  
D. B. CHAPPLE  
ONTARIO LAND SURVEYOR

PLAN 35R-17139

RECEIVED AND DEPOSITED

DATE NOVEMBER 12, 1997

*Mary C. Chasie*  
ASST. DEPUTY LAND REGISTRAR FOR THE REGISTRY  
DIVISION OF MUSKOKA 35

SCHEDULE

PART	LOT	CONCESSION	INST.	AREA
1		ALL OF ONAWAY ISLAND	ALL OF 231166	2.17 ACRES
2				0.05 ACRES

PLAN OF SURVEY  
OF ALL OF  
ONAWAY ISLAND  
IN LAKE ROSSEAU  
GEOGRAPHIC TOWNSHIP OF MEDORA  
NOW IN THE  
TOWNSHIP OF MUSKOKA LAKES  
IN THE  
DISTRICT MUNICIPALITY OF MUSKOKA

SCALE: 1 Inch = 50 Feet



GALBRAITH, VOLLICK SURVEYORS LTD.  
ONTARIO LAND SURVEYORS  
1997

SURVEYOR'S CERTIFICATE

I CERTIFY THAT:

- (1) THIS SURVEY AND PLAN ARE CORRECT AND IN ACCORDANCE WITH THE SURVEYS ACT, THE SURVEYOR'S ACT AND THE REGISTRY ACT AND THE REGULATIONS MADE UNDER THEM.
- (2) THE SURVEY WAS COMPLETED ON THE 28TH DAY OF OCTOBER, 1997.

PORT CARLING, ONTARIO.  
OCTOBER 31, 1997.

*DB Chapple*  
D.B. CHAPPLE  
ONTARIO LAND SURVEYOR

BEARING NOTE:

BEARINGS SHOWN ON THIS PLAN ARE ASTRONOMIC AND ARE DERIVED FROM A SOLAR OBSERVATION FROM STATION A, AS SHOWN HEREON.

LEGEND

DISTANCES SHOWN HEREON ARE IN FEET AND DECIMAL PARTS THEREOF.  
MONUMENTS FOUND ARE AS NOTED:

- DENOTES SURVEY MONUMENT FOUND.
- DENOTES SURVEY MONUMENT PLANTED.
- RP DENOTES ROCK POST.
- CC DENOTES CUT CROSS.

GALBRAITH, VOLLICK SURVEYORS LTD.  
ONTARIO LAND SURVEYORS

2 BAILEY STREET,  
P.O. BOX 496, PORT CARLING, ONTARIO, POB 1J0.  
(705) 765-3579 Tel. (705) 765-3599 Fax.

DRAWN BY	CHECKED BY	SCALE	FILE
D.B.C. O.L.S.	SMV, O.L.S.	1 Inch = 50 Feet	P97-023

17139